

TEXAS ARCHITECT

OFFICIAL PUBLICATION OF THE TEXAS SOCIETY OF ARCHITECTS

ARCHITECTS MIGHT HAVE SAVED MILLIONS

EDWIN W. CARROLL IS NAMED TSA PRESIDENT

UH STUDENT WINS FEATHERLITE COMPETITION

PICTURE PAGES FROM TSA AUSTIN CONVENTION

COMPLETE ROSTER OF CURRENT TSA MEMBERSHIP

**NOVEMBER
1953**

In
Appreciation

We acknowledge a profound debt of gratitude to the thousands of Architects and Engineers throughout the United States and Canada who have year after year and for many years expressed their faith in "The Nation's Building Stone" by repeatedly specifying its use.

INDIANA LIMESTONE INSTITUTE

BEDFORD,

INDIANA

INSIDE THE TEXAS ARCHITECT

Architects Might Have Saved Millions	3
Edwin Carroll Named TSA President	5
UH Student Wins Featherlite Competition	8
Pictures of the Convention	14, 15
TSA Roster	17

THE TEXAS ARCHITECT

VOLUME 4

NOVEMBER, 1953

NUMBER 7

Official Publication of
THE TEXAS SOCIETY OF ARCHITECTS

The Texas Regional District Organization of
The American Institute of Architects

1200 Bissonnet Street Houston 5, Texas

David C. Baer, Houston Editor
George Kirksey & Associates Editorial Counselors
2244 W. Holcombe, Houston
Robert Miller & Associates Advertising Counselors

PUBLICATION BOARD

David C. Baer, Chairman Houston
Thomas D. Broad Dallas
Lee R. Buttrill Temple
Albert S. Golemon Houston
Harwell H. Harris Austin
Reginald Roberts San Antonio
Edward L. Wilson Fort Worth

TEXAS SOCIETY OF ARCHITECTS OFFICERS

Albert S. Golemon President
5100 Travis, Houston
Edwin W. Carroll Vice-President
1001 E. Yandell, El Paso
George F. Pierce, Jr. Secretary-Treasurer
2200 Welch, Houston

DIRECTORS

Macon O. Carder Amarillo
Panhandle Chapter, A.I.A.
Arthur Fehr Austin
Central Texas Chapter, A.I.A.
A. B. Swank, Jr. Dallas
Dallas Chapter, A.I.A.
Herman G. Cox Fort Worth
Fort Worth Chapter, A.I.A.
Reginald Roberts San Antonio
San Antonio Chapter, A.I.A.
C. P. Donnelly Corpus Christi
Coastal Bend Chapter, A.I.A.
F. Talbott Wilson Houston
Houston Chapter, A.I.A.
Warren C. Suter Mission
Lower Rio Grande Chapter, A.I.A.
Edwin W. Carroll El Paso
El Paso Chapter, A.I.A.
Ernest Langford Bryan
Brazos Chapter, A.I.A.
William M. Carter Abilene
West Texas Chapter, A.I.A.
R. C. Hartfield Beaumont
Southeast Texas Chapter, A.I.A.
Edward L. Wilson Fort Worth
A. I. A. Director

Published monthly by the Texas Society of Architects in Houston and mailed without charge. Copyrighted 1951 by the T.S.A., and title registration applied for with the U. S. Patent Office. Editorial contributions, correspondence, and advertising invited by the Editor. Due to the nature of the publication, editorial contributions cannot be purchased. Publisher gives permission for reproduction of all or part of editorial material herein, and requests publication credit be given

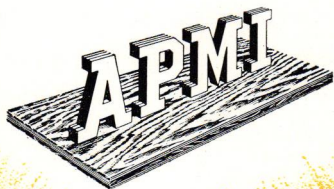
THE TEXAS ARCHITECT, and author of material when indicated. Publications which normally pay for editorial material are requested to give consideration to the author of reproduced by-lined feature material.

Appearance of names and pictures of products and services in either editorial copy or advertising does not constitute an endorsement of same by either the Texas Society of Architects or the American Institute of Architects.

CALENDAR OF EVENTS

November 8-21—Allied Arts Festival in Houston, exhibition Houston Chapter honor awards at Museum of Fine Arts.

December 16-19—Winter 1953 examinations for registration to practice architecture, at Department of Architecture, Texas University, Austin.



what this **TRADEMARK** *stands for-*

All car load sales and shipments of APMI plywood for this territory are handled by our Dallas, Texas office at 4814 Bengal Street — Telephone Logan 6647 — Deryl Glossup, Manager.

QUALITY PLYWOOD. Fine Douglas fir from Oregon's rain forests. Modern mills and machinery. Grademarking and trademarking.

EXPERIENCED MANUFACTURE. Associated is a pioneer in the plywood industry, with a third of a century of plywood manufacturing experience.

EFFICIENT DISTRIBUTION. Associated maintains its own warehouses in major building areas. This insures quick, efficient service from adequate stocks plus on-the-ground cooperation from experienced APMI salesmen.

INTEGRITY OF MANAGEMENT. Honest prices and fair dealing is a basic Associated policy.

PRODUCT DEVELOPMENT. Recent new Associated products that have opened up new sales markets include *Sea Swirl* decorative fir plywood (Select and Knotty), Vertical Grain plywood, Plyron, Hardwood-faced plywood in Birch and Lauan Mahogany. **ALL OF THESE FACTORS** are part of the Associated trademark. Look for it on the plywood you buy. We welcome your inquiries.

ASSOCIATED PLYWOOD MILLS, Inc.

GENERAL OFFICES: EUGENE, OREGON

Plywood plants at Eugene and Willamina. Lumber mill at Roseburg.

ARCHITECTS MIGHT HAVE SAVED MILLIONS

Senator Lyndon B. Johnson, in a speech before the recent TSA convention, asserted that millions of dollars were wasted in the construction of North African airbases because of an almost complete lack of advance planning, and failure to heed architects' warnings.

Revealing for the first time the results of new investigations into losses on the North African projects, Senator Johnson said that "men on the scene . . . did not appreciate the role that architects could and should play in construction."

As a result, the Senate minority leader says, architects and engineers were reduced to a secondary, advisory role and heavy losses followed.

Senator Johnson, terming the nation's architects a reservoir of technical skill which is not being properly utilized to effect proper planning and resulting economies, pointed to an important fact: Only by advance planning, and the full utilization of architectural skills and experience, can either the government, business, or the private citizen get full value for money expended in construction.

The North African fiasco, revolving about the failure to make proper use of architectural advice, is a striking example of this fact: The architect, far from being an unnecessary specialist, is a sound means of saving money while getting the best in design and construction.

Senate investigations showed clearly that many millions could have been saved (1) if there had been adequate advance planning in connection with the North African airbases (2) if proper attention had been given to the warnings of architects, who had unwisely been placed in a secondary role where their professional skills and experience were largely wasted.

Senator Johnson's remarks at the Austin convention, coming at a time when there is fresh emphasis upon sound economy at every level, were widely reported in the press and elsewhere. We call attention to them as new evidence of increasing recognition of the fact that good architecture not only fulfills a key function, but saves money as well.

Carroll, Gill, Brooks New TSA Officers

Seminar, Speech by Senator Feature Record-Breaking Convention at Austin

Edwin W. Carroll of El Paso was named president of the Texas Society of Architects at concluding business sessions of the annual TSA convention in Austin November 6. Elected to serve with Mr. Carroll after a record-breaking convention attended by almost 600 were Grayson Gill of Dallas, first vice-president; and R. Max Brooks of Austin, second vice-president; with Albert S. Golemon as regional AIA director.

Failure To Use Architects

Featured events during the three days of business and social happenings included a seminar on the role of the architect in his community; a speech by U. S. Senator Lyndon B. Johnson in which the minority leader asserted that millions of dollars were wasted on North African air bases because of failure to make proper use of architects; judging of the \$2500 Featherlite Competition; the annual TSA business sessions; and a full social calendar.

The 1953 convention, held in the historic Driskill Hotel where TSA was organized with 85 charter members in 1938, began Wednesday, November 4 with a golf tournament. Two Houston delegates, George F. Pierce, Jr. and Burke McGinty, tied for top honors.

At the opening business session Thursday morning, delegates were welcomed to Austin before committee reports by Herbert Tatum of Dallas, by-laws; Edward L. Wilson, Fort Worth, special committee; and annual reports by the president, Albert S. Golemon; and George F. Pierce, Jr., secretary-treasurer.

Four AIA Officials Present

Thursday afternoon, with Walter T.

Rolfe of Houston presiding, the seminar on "The Role of the Architect in the Community" began at 2:00 p.m. After George Bain Cummings, national secretary of the AIA and one of the four officials of the American Institute of Architects present at the convention, had traced the historic background of the seminar subject, Philip Will, Jr., president of the Chicago Chapter, gave the keynote speech.

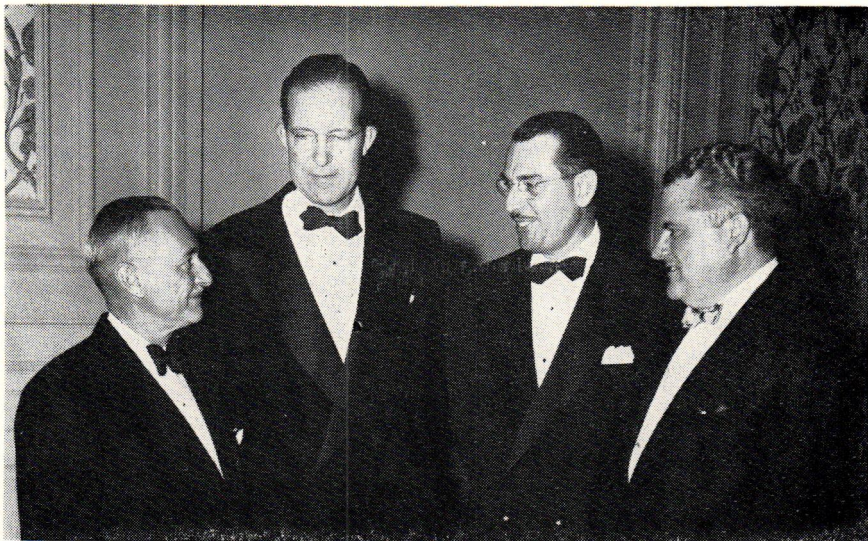
Mr. Will, widely known as a speaker for the architectural profession, contrasted the position of current-day practitioners with those of an earlier era, stressing the need for direct participation in community affairs by architects.

How the profession is seen by leaders in business and the professions was then presented in 10-minute addresses by each of the following: Roy Hofheinz, mayor of the City of Houston; Dr. J. W. Edgar, state commissioner of education; Gordon Turrentine, vice-president of the Texas National Bank of Houston; Dr. C. P. Boner, dean of the University of Texas; Judge J. W. Summers of Rusk, Texas; and Joe Parish, chief engineer for the Texas Division, Dow Chemical Company, Freeport.

Architect Must Participate

The contrasting viewpoints of these men provided material for a stimulating general discussion which followed. One general conclusion was that the architect, as a profound influence on the life of his contemporaries and those who follow, must be an active participant in community affairs if he is to understand contemporary problems and needs and be able to serve mankind.

On the final day of the convention,



TSA Officials Elected At Convention

Left to right are the new TSA officers named to serve beginning January 1: Grayson Gill, Dallas, vice-president; Edwin W. Carroll, El Paso, president; Albert S. Golemon, Houston, regional AIA director; and R. Max Brooks, Austin, second vice-president.

business sessions began with a public relations forum conducted by Walter Megronigle of Pittsburgh, Pa., representing Ketchum, Inc.

Mr. Megronigle outlined progress to date on the AIA nationwide public relations program, urged his audience to a better understanding of basic human relations techniques, and told of further plans into 1954 as the national program is expanded. Assisting Mr. Megronigle in presenting the statewide aspects of the program was Pat Nicholson of George Kirksey & Associates, Houston, public relations counselors for TSA.

Clair W. Ditchy Speaks

Business sessions continued with a 2 p.m. Friday session at which Vice-President Edwin Carroll, presided. After reports by the resolutions committee, by Fred MacKie for the state board of architectural examiners; by Leonard Lund-

gren for the legislative committee; and a general discussion, officers for 1954 were elected.

Clair W. Ditchy of Detroit, Mich., national president of the AIA; and Howard Eichenbaum of Little Rock, Ark., second vice-president for AIA, spoke at the Friday afternoon session, discussing the current outlook for the architectural profession over the nation and highlights of the current AIA program.

The Austin convention, on which chairmen Arthur Fehr and Winifred Gustafson and every member of the Central Texas Chapter worker for many months, also featured a full social calendar including parties on all three evenings, special ladies luncheons, tours of Austin and nearby areas, a musical festival and reception for Willem Dudok, noted Dutch architect, at the University of Texas; and the traditional President's dinner-dance.

Houston Chapter Awards on Exhibit

The Houston Chapter awarded one gold medal and 10 honorable mentions in a November 10 ceremony at the Houston Museum of Fine Arts. The awards were made at an afternoon reception as part of the second annual Allied Arts Festival in Houston.

Pictures and models of award-winning projects will remain on display through November 22 at the Houston museum.

The gold medal went to Lloyd & Morgan for the Melrose Building in downtown Houston. Ten honorable mention awards, all for work in Houston, were made as follows:

For Smaller Residences

For smaller residences under 2000 square feet: To James C. Morehead, Jr., for the residence of James C. Morehead, Jr. to Wilson, Morris & Crain, for the residence of Forrest Buie, Jr.

For larger residences: To Lloyd & Morgan, for the residence of R. D. Straus, To Hamilton Brown, for the residence of Judge Wilmer Hunt. To Wilson, Morris

& Crain, for the residence of R. H. Goodrich.

For institutional work: To Thomas Greacen, II, for the First Unitarian Church. To Pierce & Pierce, for the Trinity Methodist Church.

Commercial Awards

For commercial work: To Wirtz, Calhoun & Tungate, and Jackson, associate architects: Laboratory and office building at 2506 Richton. To Pierce & Pierce for office building for geophysicist and architects at 2200 Welch. To Golemon & Rolfe for architects' office at 5100 Travis.

Chairman of the awards committee was Thompson McCleary, TSA-AIA, of Houston. Members of the jury for the biennial awards competition were Thomas H. Creighton, New York, editor of Progressive Architecture; Arch B. Swank, Dallas, TSA-AIA; and John G. York, Harlingen, TSA-AIA

Pictures of prize-winning projects will be shown in later issues of the TEXAS ARCHITECT.

Fort Worth Selected As 1954 TSA Convention City

The TSA membership in the final business meeting accepted an invitation from the Fort Worth Chapter to hold the 1954 convention there. Exact dates

of the 1954 session, slated for late October or early November, will be announced.



JUST WHAT YOU'VE BEEN LOOKING FOR!

Kuhn's Velveten Alkyd Flat is an entirely new flat oil finish for use on walls and woodwork. Let us tell you more.

**KUHN'S VELVETEEN
ALKYD FLAT**

KUHN PAINT COMPANY
4020 Center Street, Houston

HENDERSON CLAY PRODUCTS

MANUFACTURERS OF
QUALITY FACE BRICK

WHITE, BUFF, PINK AND GREY

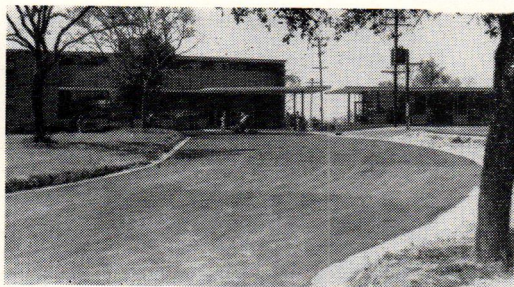
BOX 870 PHONE 3505
HENDERSON, TEXAS

Representatives in all principal cities.
Samples and Prices sent on request.



CHUPIK

WOOD MANUFACTURING CO., INC.
TEMPLE AND FORT WORTH, TEXAS
wholesale only



Trinity University Campus. Winding roads and parking lots are topped with White's Type CC Valdemix. Colglazier & Hoff, Contractors, San Antonio.

USE White's Valdemix Limestone Rock Asphalt just as it's delivered for high quality, low cost paving for playgrounds, parking lots and community centers.

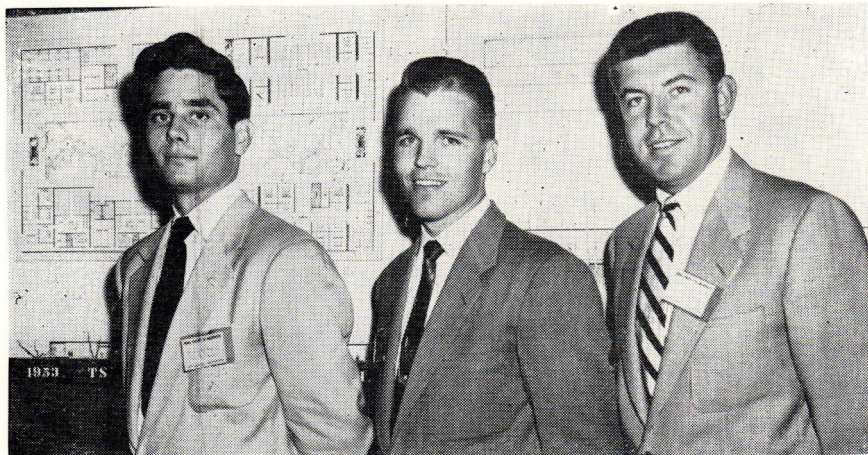
Tough, resilient, premixed at the mines, Valdemix is easily applied even by unskilled workers; saves on original cost and maintenance. Its pleasing grey tone blends with modern colors.

For complete paving information call or write us in San Antonio.

**REMEMBER
WHITE'S
VALDEMIX**
when you
specify paving



Telephone Garfield 7225
P. O. Box 499 • 209 Soledad St.
San Antonio, Texas



Three of Featherlite Winners

Left to right are three of the four grand prize winners in the \$2500 Featherlite Competition, results of which were announced at the closing session of the TSA convention in Austin. Left to right: Howard de Villeneuve of Victoria, fourth place grand prize winner, from the University of Houston; R. H. Crawford, also of Victoria and the University of Houston, grand prize winner; and Charles H. Randall of the University of Texas, second grand prize winner.

WELCOME TO THE

TEXAS SOCIETY OF ARCHITECTS
FROM OUR TEXAS DISTRIBUTORS

HOUSTON

Buie Building Material Co.
7400 Washington Avenue
P. O. Box 13215

DALLAS

Samuel A. Ellsberry Co.
3136 Routh Street
P. O. Box 6248

AMARILLO

Jenkins Brick & Supply Co.
820 West Sixth Avenue

EL PASO

Wedge & Liddell, Inc.
1004 East Missouri St.

LUBBOCK

Western Brick & Supply Co.
2301 Ave. G, P. O. Box 414

SAN ANTONIO

Jno. A. Williamson Co.
1727 Broadway

arcadia

SLIDING GLASS DOORS



DOOR CLOSERS

for Eastern and Central Texas:

JOHN J. HUGHES

3106 Drexel Drive, Dallas 5, Texas
Tel. LAkeside 5070

for Amarillo, Plainview, Lubbock,
Lamesa, Midland and West:

L. E. CLEAVINGER

616 Mercantile Bldg., Denver 2, Colo.
Tel. Keystone 7313

Naturally Beautiful...

INTERIORS

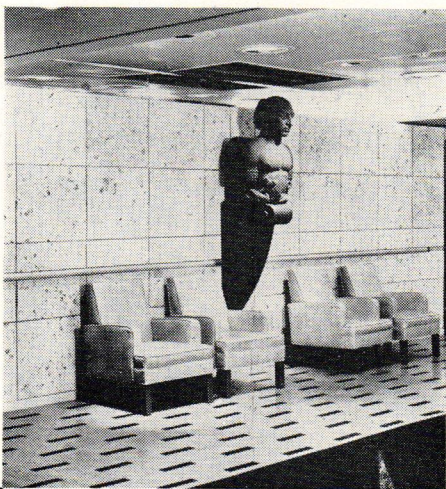
with the

warm

natural

beauty

of



Designer Henry Dreyfuss uses Cordova Shell for unusual decorative force aboard the luxury ship Independence

CORDOVA

Shell Limestone

Write today for samples, detailed information and beautiful color showings of Cordova Limestone.

Interior effects accomplished with the rich, natural beauty of Cordova Shell Limestone are incomparable for standout beauty, for unusual design.

Its rich, creamy coloring . . . its golden, shell-marked patterns give Cordova Shell Limestone distinctive originality . . . yet it blends harmoniously with other facing materials.

Cordova Limestone is readily accessible . . . its cost is surprisingly modest . . . yet wherever it is used, it gives you buildings with higher resale value.

And no other material can give you interiors of such stunning effects, such rich coloring, such enduring beauty . . . it is a challenge to the imagination.

TEXAS QUARRIES, INC.

P. O. Box 91

Austin, Texas

Call on

Binswanger & co.
of Texas

for modern, new,
practical ideas in
STORE FRONTS

We offer such fine,
nationally known,
quality items as:



LOF
GLASS
TUF-FLEX
Tempered
Plate Glass DOORS

HOLLOBILT
ALUMINUM ENTRANCES AND
ARCHITECTURAL METALWORK

**Seven Texas Warehouses
to give you SERVICE**

- HOUSTON
- FORT WORTH
- BAYTOWN
- DALLAS
- AUSTIN
- BEAUMONT
- PORT ARTHUR

University of Houston Student Wins Grand Prize In Featherlite Competition

The first grand prize in the \$2500 Featherlite Competition for senior architectural students in five Texas colleges and universities went to R. H. Crawford of Houston, a student at the University of Houston. Results were announced at the Austin convention, and awards made at the President's Dinner.

The second grand prize in the contest, sponsored by the Featherlite Corporation of Austin and TSA, went to a University of Texas student, Charles H. Randall of Shreveport, La.

Third prize winner was J. M. Thornton of Lubbock, representing Texas Tech, and fourth grand prize went to Howard De Villeneuve, another Houstonian and student at the University of Texas.

1954 Featherlite Competition

George Bickel of the Featherlite Corporation has announced that the TSA board has accepted Featherlite's offer to continue the competition in 1954.

The Featherlite Competition this year involved the designing of a county courthouse. In order to make the problem as practical and as worthwhile to students as possible, two pages of actual requirements of a typical Texas county were set forth by the TSA Committee of Education, which was generally in charge of the \$2500 contest.

Working under Thomas Greacen, II of Houston, TSA-AIA, as Chairman, the committee set up a procedure whereby each architectural school in the state submitted five designs for the final judging to Martin S. Kermacy, TSA-AIA, of the University of Texas architectural faculty.

Final selections were made by a jury composed of Baldwin Young of Houston, chairman; Herbert Tatum of Dallas; John York of Harlingen; and Marvin Eichenroth of San Antonio, all TSA-AIA.

New Products

The F. W. Dodge Corporation has announced publication of "Motels, Hotels, Restaurants and Bars", a book showing "the great strides made in the design of these fast-growing building areas. The book contains over 500 illustrations. It is obtainable through 119 West 40th Street, New York 18, N. Y.

Tree Life select cabinet stock, a new factory-packaged, cabinet-grade Douglas fir plywood, is being manufactured by the Saint Paul & Tacoma Lumber Company, Tacoma 2, Wash. The new panels are described as a premium-quality material for craftsmen, made especially for fine natural finished cabinet work. They come in standard sizes of 4' x 8' sheets, 3/4" thick.

The LCN Door Closer Selector, a perforated slide calculator, will give the correct size of concealed or exposed closer when a given door width and location are set in the index window of the device. The device is available without cost through LCN Closers, Inc., Princeton, Ill.

With Our Advertisers

Uvalde Rock Asphalt Company has added seven new colors to Vina-Lux Reinforced Vinyl Tile. Charts of the new colors are available through William K. Clark, sales supervisor, P. O. Box 531, San Antonio 6.

Twin Chambers In-A-Wall gas ovens, installed in the Dallas home of Mr. & Mrs. Forest N. Hall, are described in an issue of HOUSE BEAUTIFUL.

ANACONDA



Anaconda 85 Red Brass Pipe
Anaconda Copper Pipe
Anaconda Type "K" Copper Water Tubes
for underground and interior service
Anaconda Type "L" Copper Water Tubes
for interior service
Anaconda Type "M" Copper Tubes
for soil, waste, and vent lines
Anaconda Refrigeration Tubes
Copper Tube Fittings

THE AMERICAN BRASS COMPANY

General Offices: Waterbury 20, Connecticut

Houston District Sales Office:

1114 Texas Ave. Building, Houston, Texas

For reliable service on COPPER and COPPER ALLOYS call an Anaconda Distributor

Wives Organized Women's Activities Program

Wives of Central Texas Chapter members, with Mrs. R. Max Brooks as women's division chairman, organized and carried out an extensive program for women attending the Austin TSA convention this year.

One of the features of this program was the Hospitality Lounge maintained by women convention guests at the Driskill Hotel. This lounge was equipped and staffed by members of the Women's Architectural League of Austin, headed by Mrs. Charles Granger.

Another service was that provided at

the convention by the "Howdy Girls", headed by Mrs. Louis Southerland. These ladies were official hostesses at convention sessions.

Among the many special social events for women convention delegates were the opening luncheon in the ballroom of the Commodore Perry Hotel; a recital in the Music Building at the University of Texas; an open house and reception at the School of Architecture; and a closing luncheon at the Austin Country Club.

Mrs. Martin Kermacy was publicity director for the women's division.

Registration Examinations For Winter 1953 Set December 16-19

According to an announcement from H. E. Jessen, secretary-treasurer of the Texas Board of Architectural Examiners, Winter 1953 examinations for registration to practice architecture in the State of Texas will be held December 16-19 at the Department of Architecture, University of Texas, Austin.

Further details may be obtained from Mr. Jessen, at 2816 Hemphill Park, Austin.

Four National Officers Of AIA in Austin for TSA Annual Meeting

The fourteenth annual TSA convention at Austin had as honored guests four national officials of the American Institute of Architects. Among those present for the entire proceedings were Clair W. Ditchy of Detroit, president; Howard Eichenbaum, Little Rock, Ark., second vice-president; George Bain Cummings of Binghamton, N. Y., secretary; and Maurice J. Sullivan of Houston, treasurer.

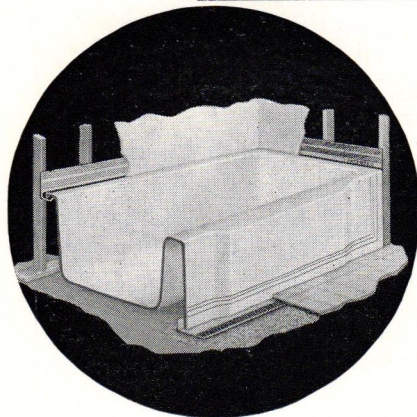
It's a Lucke Leak-Proof Bathtub Hanger

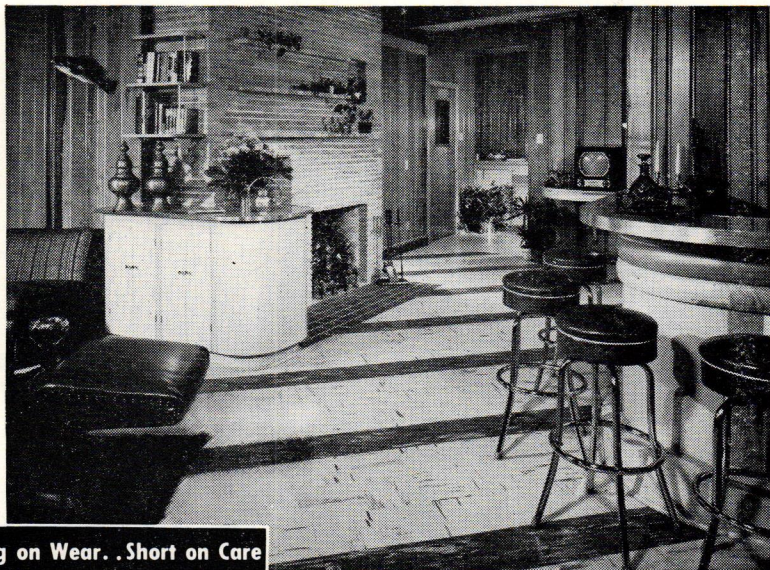
It DOES stop Leaks
It DOES stop Cracks
It DOES stop Expense
It DOES Overcome Spotty or Soiled
ceilings

Guaranteed Leak-Proof for Life of Building
Specify LUCKE for Permanence.

Write for Information

WILLIAM B. LUCKE, INC.
P. O. Box 177 Wilmette Illinois





Long on Wear. . Short on Care

Vina-Lux[®]

**. . THE
MODERN
FLOORING
FOR
MODERN
HOMES**

*Ask us for samples
—and the name of the
nearest AZROCK
Flooring Contractor.*

Matching the modern home in superlative beauty, Vina-Lux gets admiring looks wherever it is used. It is without a peer for living rooms or dens . . for kitchens, dining rooms or any food serving area. Grease, oils, acids or alkalis won't harm it, spilled foods won't spoil it, dirt and grime won't wear in.

This superbly modern flooring brings the miracle of vinyl-asbestos to the modern home. It rarely needs hard scrubbing, never needs waxing, brings safer footing, easier walking because it has a cushioned resiliency. And Vina-Lux brings the ultimate in brilliant new color . . colors so light and bright they fit to perfection today's decorative requirements. For floors that look beautiful, *stay* beautiful, Vina-Lux will give more wear with less care than any other flooring.

UVALDE ROCK ASPHALT CO.

FROST BANK BUILDING • SAN ANTONIO, TEXAS
Makers of AZROCK • VINA-LUX • AZPHLEX • DURACO

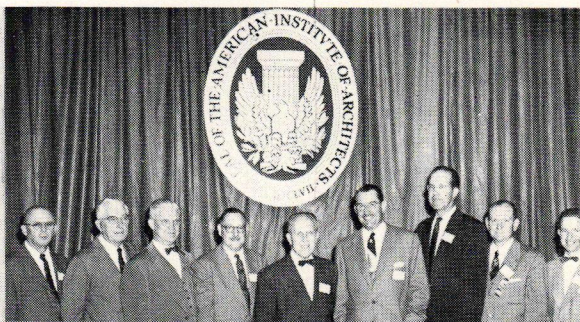


"Azrock Makes Fine Floors"

Pictures Of Annual TSA Convention



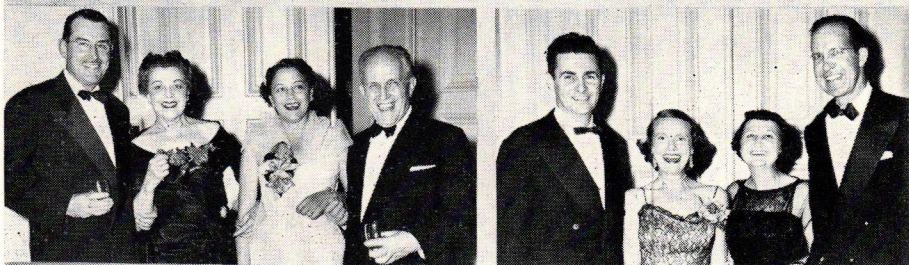
William Dastok Speaks



TSA and AIA Officials

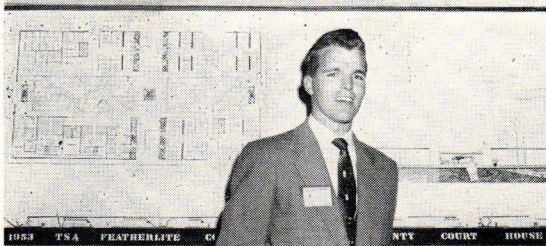


Ralph Bryan, A French Cancan



The Colaneros and the Mitchys

Just Before The President's Dinner



Featherlite Wmner R. H. Crawford



All Dressed Up For The Banquet

Pictures Of Annual TSA Convention



Phillip Wills, Jr. Addresses Seminar



Arthur Fair, Convention Chairman



They're watching Ralph Bryan



Opening Night Party Scene



"Sheriff" Carroll And His Posse



Hillbillies All, at The Party



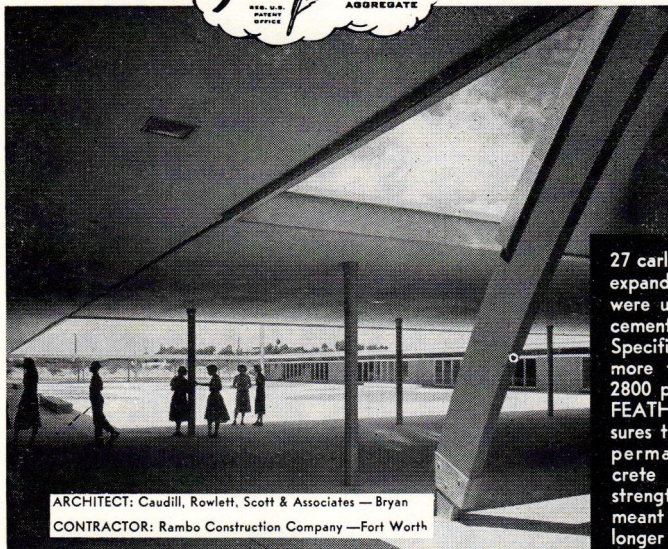
Producers' Council Party

LAREDO'S NEW JUNIOR HIGH SCHOOL

COMBINING



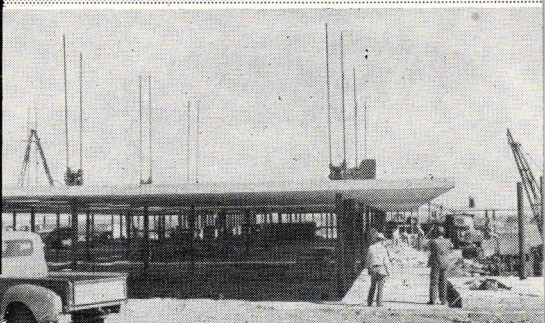
LIGHTWEIGHT CONCRETE WITH
LIFT-SLAB Construction



ARCHITECT: Caudill, Rowlett, Scott & Associates — Bryan
CONTRACTOR: Rambo Construction Company — Fort Worth

27 carloads of FEATHERLITE expanded shale aggregate were used . . . 5½ sacks of cement to the cubic yard. Specified 3000 p. s. i. was more than obtained with 2800 p. s. i. in 21 days . . . FEATHERLITE concrete assures this school a fireproof, permanent, insulated concrete roof . . . The high strength structural concrete meant economy through longer spans, reduced columns and savings in steel.

Approximately 90,000 sq. ft. FEATHERLITE concrete in roof slab . . . poured in 11 sections . . . 11 working days to lift. Youtz-Slick Lift-Slab method of construction proved economical through time saving and elimination of expensive forming.



GET THE FACTS ON FEATHERLITE

THE



CORPORATION

JACK FROST
President

Charter Member EXPANDED SHALE INSTITUTE
OLDEST AND LARGEST PRODUCERS OF
EXPANDED SHALE AGGREGATE IN THE SOUTH

George Bickel, Sales Manager & Engineer

402 West Sixth Street . . . AUSTIN, TEXAS . . . PHONE 6-8974

MEMBERSHIP ROSTER

TEXAS SOCIETY OF ARCHITECTS

BRAZOS CHAPTER

CORPORATE MEMBERS

Baker, Arch C., P. O. Box 1043, College Station
 Caudill, W. Wayne, P. O. Box 1351, Bryan
 Langford, Prof. Ernest,
 P. O. Box 101, College Station
 Mayfield, Col. Henry, Box 1169, Bryan, Texas
 Nash, Wm. E., Box 41, Bryan
 Rowlett, John M., Box 32, F. E., A. & M. College,
 College Station

ASSOCIATE MEMBER

Rotsch, Melvin M., A. & M. College, College Station
 Vrooman, F. E., A. & M. College, College Station

CENTRAL TEXAS CHAPTER

CORPORATE MEMBERS—AUSTIN

Baldrige, Doyle M. 4005 Jefferson
 Barr, Howard R., 205 E. 8th Street
 Barrick, Nolan E. 2401 Pemberton Pkwy.
 Brooks, R. Max 205 E. 8th Street
 Brush, Carlton 4000 Lullwood Road
 Buffler, J. Robert, 707 E. 32nd Street
 Cottingham, Worth, Jr., 828 Brown Bldg.
 Dieter, Frederick W. 1907 Arthur Lane
 Dillard, Roy Earle, 4506 Crestway Drive
 Driscoll, Don J., 3416 Hillview
 Dornberger, Werner W., 810 E. 23rd Street
 Fehr, Arthur, 502 E. Fifth Street
 Gannaway, Allwyn C., 2204 Mcuntainview
 Gannaway, Herbert S., Office of Sup'v. Architect,
 University of Texas

Goldsmith, Goldwin, 1902 San Gabriel
 Gragg, Hugh E., 2007 Schulle Avenue
 Granger, Charles T., 502 E. Fifth Street
 Greeven, Aiton E. 2816 N. Guadalupe
 Gustafson, W. O., 4303 Avenue F
 Harris, Glynn L., 209 W. Seventh Street
 Harris, Harwell H., 1406 Windsor Road
 Jessen, Wolf E., 2816 N. Guadalupe
 Jessen, Bob (Bubi) 2816 N. Guadalupe
 Kermacy, Martin S., 2816 Woodridge Drive
 Kuehne, Hugo F., 205 E. 8th Street
 Leipziger-Pearce, Hugo, 1314 W. side Drive
 Lundgren, Leonard J., 3205 Churchill Street
 Mayhull, Temple B. 1906 Raleigh
 Maurer, Edward J., 1508 Woodlawn
 McMath, Hugh L., School of Arch., Univ. of Texas
 Millhouse, Charles A., 408-B W. 21st
 Moore, Walter C., Jr., 2504 Woolridge Drive
 Niggli, Emil, 4303 Avenue F
 O'Connell, Wm. R. 605 W. 18th Street
 Page, C. H., Sr., 305 W. 11th
 Page, C. H., Jr., 305 W. 11th
 Page, George M., 602 W. Avenue
 Page, Louis C., Jr., 602 W. Avenue
 Phillips, Henry W., Jr., 3103 Lafayette Street
 Pollard, James J., c/o University of Texas
 Probst, Victor G., 305 Perry Brooks Bldg.
 Roessner, Roland G., School of Arch., U. of Texas
 Rowe, Richard S., 712 Post Oak
 Scott, John Linn, 406 W. 17th Street
 Smvrl, Mrs. Myra Scott, P. O. Box 1083
 Southerland, Louis F., 602 West Avenue
 Stautz, Carl Henry, 1704 Exposition Bldd.

Thomas, Roy L., 2812 N. Hemphill Park
 Turley, Hans E., 19 Scott Crescent
 Walling, George L., 1506 N. Loop Blvd.
 Watson, Mrs. A. R., P. O. Box 270
 White, James Roy, 205 E. 8th Street
 White, Robert L., Off. of Sup'v. Architect,
 University of Texas
 Wright, George S., 3201 Cherry Lane

CORPORATE MEMBERS—OUT OF TOWN

Buttrill, Lee R., Box 45, Temple
 Marak, Kenneth J., Box 45, Temple

ASSOCIATE MEMBERS—AUSTIN

Allen, John Chiles, 406 W. 17th
 Goeth, Ralph, P. O. Box 896
 Gubbells, Jac L., 2515 Woolridge
 Pendley, C. M., Jr., 1417 Bentwood Rd.
 Pressler, Paul, 2520 Spring Lane

ASSOCIATE MEMBERS—OUT OF TOWN

Briggs, C. A., School of Architecture,
 University of Colorado, Boulder, Colo.

JR. ASSOCIATE MEMBERS—AUSTIN

Beran, Ed E., 914 West 22nd
 Braun, Lester A., 2117 W. 10th Street
 Kelling, Herman, 2005 Stamford Lane
 Koerber, Phillip G., 1512 Woodlawn, Apt. 3
 Logsdon, Vail E., 1703-A Brackenridge Apts.
 Looke, Dudley, 3305 Speedway
 Probst, Victor G. 805 B W 16th Street
 Pursell, Joe T. 805 West 10th
 Youngblood, Robert L. 3820 Duval

T. S. A. MEMBERS—OUT OF TOWN

Huie, Louis L., Rt. 4, Georgetown, Texas
 Johnson, James E., 202 North Crockett,
 Cameron, Texas

COASTAL BEND CHAPTER

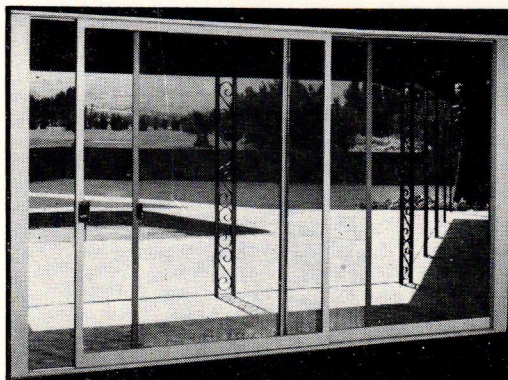
CORPORATE MEMBERS—CORPUS CHRISTI

Anderson, Walter H., 210 Jones Bldg.
 Brock, Victor, 210 Jones Bldg.
 Christian, Ben E., 921 Ocean Drive
 Donnelly, C. P., 702 Texas Ave.
 Evans, Lynn A., 807 Coleman
 Evans, Roy, 3654 Lawnview St.
 Ford, Earl R., Jr., 305 S. Chaparral Street
 Hamon, E. Dexter, 912 Ocean Drive
 Hamon, Everett E., 715 S. Tancahua
 Hans, Joseph A., Jr., 801 Coleman Street
 Hardy Nat W., 59 Country Club Place
 Johnson, Otis F., 141 Naples Street
 Smith, Vernon, 1733 Brownlee
 Smyth, Joe G., Jr., Gulf Security Bldg.
 Smyth, Needham B., Gulf Security Bldg.
 Tanner, Carroll V., 3340 Floyd Street
 Whittet, William, 3735 Aransas
 Wilde, Walter Ernest, Gulf Security Bldg.
 Wood, William C., 502 Wilson Bldg.

ASSOCIATE MEMBER—CORPUS CHRISTI

McCord, Horace B., 715-D Minnesota St.

Enjoy indoor-outdoor living with...
Arislide Steel Sliding Doors



Quality-Built
to fit your home

- *Roller bearing rollers for smooth operation.*
- *Stainless steel-capped track, bronze hardware for durability.*
- *Springbronze weather-stripped.*

**WRITE FOR
COMPLETE LITERATURE
TODAY!**



Since 1912

MICHEL AND PFEFFER IRON WORKS, INC.

N. K. Juvet, Manager, Steel Windows Division • 212 Shaw
Road, South San Francisco, California • PLaza 5-8983

SEE YOUR LOCAL DEALER FOR COMPLETE ARISLIDE CATALOGUE:

SAN ANTONIO

Fred Benson Co.

FORT WORTH

Ray F. Holmes Co.

AUSTIN

Calcasieu Lumber Co.

DALLAS

Macatee Building Materials Co.

HOUSTON

W. L. Macatee & Sons

EL PASO

Modern Iron Works

WACO

C. H. Ruebeck Co.

CORPUS CHRISTI

Safety Glass Co.

SAN ANGELO

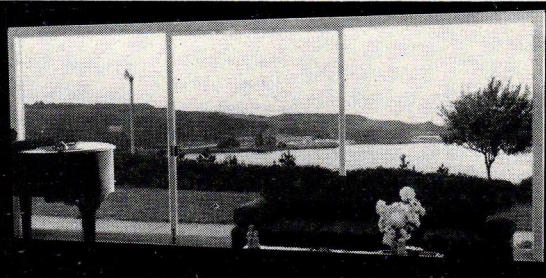
Stricklen-Powell Glass & Mirror Co.

BEAUMONT

Tri-City Building Supply Co.

ABILENE

West Texas Building Supply Co.



DALLAS CHAPTER

CORPORATE MEMBERS—DALLAS

Adams, Jay H., 518 W. Davis
Adams, Moffatt D., 518 W. Davis
Ahlschiager, Walter W., P. O. Box 6503
Alexander, Geo., 2810 Welburn
Anderson, Edward J., 425 S. Field Street
Bennett, J. Murrell, 2812 Fairmount
Biederman, Sam, Nat'l City Bk. Bldg.
Blocker, Harry E., Jr., 6825 Park Lane
Broad, Thos. D., 618 Reserve Loan Life Bldg.
Brooks, LaVere, 1330 N. Industrial
Brown, Stanley, 4012 Cedar Springs
Bryan, Ralph, Norman Bldg.
Buford, Frederic S., 326 Interurban Bldg.
Carsey, John D., 508 Lacy Bldg.
Cavitt, L. C., Jr., 4801 Lemmon Ave.
Cheek, James B., 1901 1/2 N. Harwood
Collins, G. Mallory, 2921 Fairmont
Cook, Walter W., 9003 Denton Drive
Cooper, Peyton G., 2203 1/2 Cedar Springs
Corgan, Jack M., 507 Melba Bldg.
Crittenden, Norman W., 2812 Fairmount
Crown, Phillip T., 410-A W. 8th St.
Dahl, George Layton, 2101 N. St. Paul
Danna, John B., 2902 Routh
Davis, Edward C., 618 Res. Loan Life Bldg.
Dean, Thomas Scott, 3607 Marsh Lane Place
Decker, Howard G. Jr., 2814 Fairmount
DeFonds, Ardery V., 1210 1/2 Main St.
Dewitt, Roscoe P., 2025 Cedar Springs
Edwards, George W., 1509A Cochran
Feinberg, Raymond S., 326 Interurban Bldg.
Fisher, J. Herschel, 5217 Ross Avenue
Fooshee, Marion F., 1901 1/2 N. Harwood
Foster, Dales Young, 2812 Fairmount
Gamble, Eugene B., 408 Melba Bldg.
Gill, Grayson, 1913 San Jacinto
Goodwin, Robt. D., 4801 Lemmon Ave.
Gordon, Joseph F., 4425 Greenville Ave.
Hamilton, Earle Grady, Jr., 2025 Cedar Springs
Harison, Fred L., 2025 Cedar Springs
Harper, Terrell R., 2101 N. St. Paul
Harrall, Geo. F., 3840 Turtle Creed Dr.
Hidell, William H. Jr., 2814 Fairmount
Hill, Bertram C., 4522 Ross Avenue
Jordan, Chester Harold, 3607 Marsh Lane Place
Joseph, Will C., 803 Praetorian Bldg.
Kean, Frank D., 201 Thomas Bldg.
Kemp, Harris A., 2101 N. St. Paul
Klamberg, Wade H., 2808 Oak Lawn
Kleuser, M. C., 318 Cadiz
Lane, Clifford J., 408 Melba Bldg.
Lane, Roy E., 3469 Amherst
Lemmon, Mark, 201 Thomas Bldg.
McCammon, James N., Reserve Loan Life Bldg.
Merrill, W. Ralph, 501 Trinity Univ. Bldg.
Meyer, Howard R., 2907 Maple Ave.
Mills, Joseph M., 921 Mercantile Bk. Bldg.
Morgan, Jack Hubert, 7007 Bob-O-Link Drive
Moseley, Hal M., 1913 San Jacinto
Nelson, Donald S., 618 Reserve Loan Life Bldg.
O'Bannon, Lucius E., 2610 Fairmount
Orth, William A., 3445 Hanover
Perkins, John A., 2203 1/2 Cedar Springs
Perry, Robert J., 4114 McMillan Ave.
Pierce, A. H., 2708 Routh
Porter, I. D., 6910 Robin Road
Prinz, Harold, 1330 N. Industrial Bld.
Richter, Will S., 815 N. Winnetka
Rooth, Carl H., 618 Reserve Loan Life Bldg.
Russ, Thomas A., 7007 Junius Street
Sandfield, Max M., 4013 Cedar Spring
Smith, Carlyle E., 419 Jefferson
Smith, Harwood Knox, 921 Mercantile Bk. Bldg.
Swank, A. B. Jr., 2025 Cedar Springs
Tatum, Herbert M., 2812 Fairmount

Thompson, I. Gayden, 5711 Swiss Ave.
Thomson, Henry B., 301 Burt Bldg.
Vaughn, Harold, 308 S. Akard—Room 803
Welch, Everett V., 710 Thomas Bldg.
Westfall, Delbert C., 501 Trinity Universal Bldg.
White, Latham, Doggett Bldg.
White, Robert D., 1330 N. Industrial
Wiltshire, John P., 4403 Camden
Witchell, Chas. B., 2214 Cedar Springs
Woerner, F. J., 1008 Stonewall
Worley, Ben Frank, 712 West Davis
Yoakum, Hal O., 3433 Southwestern Blvd.

CORPORATE MEMBERS—OUT OF TOWN

Brown, John, 502 M.P. Bank Bldg., Sherman
Chapman, Jay L., 502 M.P. Bank Bldg., Sherman
Cox, John V., 411 Texarkana Natl. Bank Bldg.,
Texarkana
Curtis, John P., Caiza Postal 1264, Rio de Janeiro
Downing, James L., 406 N. High St., Henderson
Hazelwood, Otis L., 1 & 2 Link Bldg., Palestine
Hubach, Carl C., 1211 E. North St., Kilgore
Kelly, Will L., 521 Glover Crim. Bldg., Longview
Kilmer, Roy Henry, 3819 Pine Street, Greenville
Lightfoot, Will H., 10 First St., N.E., Paris
Lipscomb, Robert D., P. O. Box 1496, Kilgore
Maffitt, Theo. S., 510 N. Sycamore, Palestine
Reinheimer, Robt. J., 411 Texarkana Natl Bank
Bldg., Texarkana
Simons, Shirley T., 722 1/2 S. Bois d'Arc, Tyler
Wilcox, E. Davis, 211 Professional Bldg., Tyler
Williams, David R., 324 N. Sterling St.,
Lafayette, La.

ASSOCIATE MEMBERS—DALLAS

Anderson, Aubrey D., 6462 Bordeaux
Benson, Wm. Edward, 4347 Lovers' Lane
Braden, David R., 1435 Cedar Hill
Clutts, James A., 5643 Boaz
Cummings, Raymond H., 2507 Sunset
Fretz, E. A. Jr., 711 Liberty St.
Freeburg, Charles Robt., 10812 Joaquin Drive
Hall, Warren H., 5941 Meaders Lane
Hefley, Wm. Tell, 3912 Stanford
Hewitt, Chester H., 2918 Rosedale
Jarvis, Donald E., 2012 Savoy
Kerr, Edward L., 1143 Brunner
Lewis, Sam B. Jr., 5008 1/2 Greenville
Morgan, Jack H., 6008 Gurley
McGill, Geo. C., 3207 Hudnall
Oglesby, E. O., 3620 Overbrook
Russell, James A., 4616 Southern
Sibeck, Gordon, 6446 Lupton Drive
Smith, Stephen J., 11423 Flamingo
Stueber, Theodore H., 5410 McCommas
Tatum, A. J., 4115 A Central Expressing
Teipel, Albert, 3145 Mt. Springs
Tracy, H. L., 3821 Beechwood Lane
West, John Stark, 1234 N. Winnetka
Westfall, Delbert C., 6202 Martel
Wright, E., 3136C Hudnall
Yost, William George, 9836 Bowman Blvd.

ASSOCIATE MEMBERS—OUT OF STATE

Spillman, Pat Y., c/o American Express,
Piazza di Spagna, Rome, Italy
Wyatt, Ralph L., Sta. "A", Box 440
St. Petersburg, Fla.

JR. ASSOCIATE MEMBERS—DALLAS

Berry, Harold A., 8566 Santa Clara Dr.
Boerder, Eugene F., 3956 Lively Lane
Cannon, Gershon, 5715 Ross Ave.
Crook, Jack, 6730 Vanderbilt
Dainton, William W., 201 Thomas Bldg.
Davies, Robert E., 124 Mt. Ararat Street
Dryden, Horace E., 5630 1/2 Boaz

WRIGHT

3 DIVISIONS TO SERVE YOU!

1

RUBBER AND VINYL TILE DIVISION

The oldest, most-respected name in rubber tile flooring, now brings you another quality flooring . . .

WRIGHT VINYL TILE . . .

a thermo-set plastic with a smooth, non-porous, non-slip surface . . . keeps its shape and color in spite of temperature changes.

2

REINFORCED PLASTICS DIVISION

New, lightweight building materials:

STURDALITE—shatterproof, translucent, multipurpose structural panels permit unlimited daylighting, dynamic decoration, at low cost.

VERSATEX—roofing and siding material that never needs painting!

VERSARITE—superior chalkboard material for school-room or nursery; won't become mottled and never needs costly refinishing.

3

CUSTOM MOLDING DIVISION

Plastic and rubber parts and finished items for commerce and industry.



WRIGHT MANUFACTURING CO.

5608 Post Oak Road • Houston 5, Texas

Wright Rubber Tile — Wright Vinyl Tile
Sturdalite — Versatex — Versarite

Epps, Jess, 2804 Lovedale
 Floyd, James W., 4302 W. Lovers Lane
 Fuertes, Louis S., 4922 Wateka
 Goeldner, Paul, 8548 San Fernando Way
 Heath, Jerry, 2703 Fitzhugh
 Hinman, Jack, 2726 Harlindale
 Huddleston, Norman H., 3412 S. Ewing
 Jones, G. T., 4156 Glenwick
 Jones, Harold W., 418 W. Clarendon
 Kirby, Lt. Peter, Public Works Dept.,
 Naval Air Station
 Long, O. E., 6918 San Mateo
 Marinick, Otto A., 3926 Potomac
 Mills, Geo. F., 4010 Shenadoah
 Musgrave, Richard A., 3242 O'Bannon
 Rowley, Lyle B., 6441 Gaston
 Smith, Stanley S., 8605 Thackery
 Todd, J. S., 4034 Buena Vista
 Upshaw, Forrest, Jr., 3119 O'Bannon
 Weisbecker, Burton F., 6526 C Bandera Ave.
 Wiley, Jas. E., 3325 Hudnall

JR. ASSOCIATE MEMBERS—OUT OF TOWN

Burch, Arthur L., 920 Bellaire, Tyler
 Gordon, C. M., Box 833, Grapevine
 Miranda, R. V., 706 S.E. 11th St., Grand Prairie

JR. ASSOCIATE MEMBERS—OUT OF STATE

Rich, Joe Lynn, Patrol Squadron 48 c/o APO
 San Francisco

T. S. A. MEMBERS—DALLAS

Alexander, Robt. E. Jr., 3704 Abrams Rd.
 Bulger, Clarence C., 4207 Abbott
 Greenfield, Lee R., 2116 N. Field
 Leinbach, Chas. H., 600 1/2 E. Jefferson
 Leinbach, J. L., 600 1/2 E. Jefferson
 McClure, M. W., 3906 Lemmon
 Pitzinger, J. A., 1012 Southland Life Bldg.
 Reed, Wm. D. Jr., 220 Merc. Secur. Bldg.

T. S. A. MEMBERS—OUT OF TOWN

Metcalfe, James E. Jr., 1107 W. Fifth Avenue,
 Corsicana

EL PASO CHAPTER

CORPORATE MEMBERS

Carroll, Edwin W., 4305 Cambridge
 Crocker, Theodore, 1217 Prospect Ave.
 Daeuble, Louis, Jr., 2320 N. Virginia
 Higgins, Clarence, 1701 Carter Drive
 Licht, Richard H., 130 Buena Vista
 McGhee, Percy W., 1611 N. Campbell
 Monroe, James E., 1631 St. John Road
 Thorman, Otto H., Rt. 2, Box 287, Montoya Drive
 Waterhouse, C. E., 1304 Madeline Ave.
 Wuehrmann, William G., 310 N. Stanton Street

ASSOCIATE MEMBERS

Bynum, M. O., 116 Pasodale Road
 English, Hugh, 1501 Wainwright
 Foster, J. P., 3718 Savannah Street
 Garland, Robt. D., Jr., 1001 E. Yandell
 Stanley, Duffy, 2528 Copper Street
 Thorpe, W. F., 1115 Montana
 Young, Carl J., 823 Chile

ASSOCIATE MEMBER—OUT OF TOWN

Smith, Victor J., 906-E Avenue D, Alpine

JUNIOR ASSOCIATE MEMBERS

Dana, Howard, 1715 N. Stanton Street
 Middleton, Sam T., 2110 N. Florence St.
 Rand, Pat, 1105 N. Virginia
 Schaefer, Hilpert, 713 N. Kansas Street
 Turner, Doris B., 5920 Texas

FORT WORTH CHAPTER

CORPORATE MEMBERS—FORT WORTH

Armstrong, Charles E., 300 First Life Bldg.
 Black, Clifford H., 3421 Brady Ave.
 Boese, Olin, 3322 Bristol Rd.
 Bosworth, Harry I., 516 Neil P. Anderson Bldg.
 Buchanan, James C. Jr., 2945 Timberline Dr.
 Cahill, Paul Trester, 5436 Sam Calloway Road
 Cappelle, A. J., 212 Lindenwood Ave.
 Chromaster, Charles O., 1420 Ballinger
 Clark, Clifton Gilbert, 1733 Morningside
 Cox, Herman G., 401 Neil P. Anderson Bldg.
 Crane, Hubert H., 3711 Camp Bowie Bldg.
 Dunlap, Jay Teel, 209 Majestic Bldg.
 Easterwood, Birch D., Neil P. Anderson Bldg.
 Epperly, Don, 209 Majestic Bldg.
 Floore, John W., 1401 W. Lancaster
 Geren, Preston M., 1607 Ft. Worth Natl Bk. Bldg.
 Geren, Preston M. Jr., 1607 Ft. Worth Natl Bk.
 Bldg.

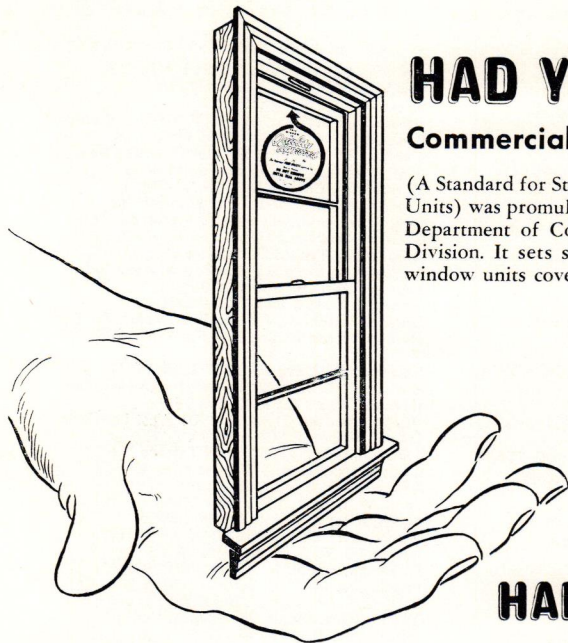
Gernsbacher, Larry M., 3237 Sondra Drive
 Harden, T. E. Jr., 1607 Ft. Worth Natl Bk Bldg.
 Hedrick, Wyatt C., P. O. Box 765
 Hueppelsheuser, Clyde R., 1401 West Lancaster
 Jeninek, Robert, 6304 Newark
 Jones, John W., 1708 Sunset Terrace
 King, Arthur George, 819 Penn Street
 Koeppe, Earl E., 1005-1st Natl Bk. Bldg.
 Lane, William R., 5555 Lake Street
 Malin, Alfonse W., 1401 Rio Grande
 Moore, Dick Clark, 2570 Highview Terrace
 Patrick, G. T., N. P. Anderson Bldg.
 Patterson, Joseph J., 209 Majestic Bldg.
 Pelich, Jos. R., 1103 Com. Std. Bldg.
 Roberts, F. W. Digby, 1205 Clover Lane
 Sowden, Geo. Swiler, 209 Majestic Bldg.
 Stuart, Lee, Jr., 4738 El Campo
 Tomlinson, DeWitt F., 3729 Cresthaven Terrace
 Vowell, Jim D., 1612 Electric Bldg.
 White, Warren G., 701 Flat Iron Bldg.
 Wilson, Edw. L., 209 Majestic Bldg.
 Wolfe, Howard C., 209 Majestic Bldg.
 Woltz, Robt. P. Jr., 1030-7th Ave.
 Woodruff, Clyde H., 3859 Medford Rd.

CORPORATE MEMBERS—OUT OF TOWN

Arnold, Ray C., 1406 Grant St., Wichita Falls
 Atkinson, Jackson B., 5905 Velasco, Dallas
 Cocke, John W., 1507 Franklin, Waco
 Dixon, Jesse G., P. O. box 1754, Wichita Falls
 Easterwood, K. V., 513 Serv. Mtg. Bldg., Waco
 Johnson, Clifford H., 3308 Prytania, Apt. 10,
 New Orleans, La.
 Morgan, George W., 529 Willow Road, Irving
 Neel, W. Morris, 1502 Grace Street, Arlington
 Olson, Gustav R., 412 Service Bldg., Waco
 Pardue, R. B., Jr., 3207 Garfield, Wichita Falls
 Roberts, Harris Hill, 1100 Medical Arts Bldg., Waco
 Shupe, George W., 711 Abram, Arlington
 Turner, John D., 803 Bluff St., Wichita Falls
 Witt, James D., 514 Amicable Bldg., Waco

ASSOCIATE MEMBERS—FORT WORTH

Bailey, Donald Guv, 4040 Merida
 Buzard, Richard, 522 N. P. Anderson Bldg.
 Chambers, Robt., 1207 W. Richmond
 Davidson, E. Don, 3110 Wingate
 Durgan, Jack C., 5305 B. Bryce
 Hamm, T. Z., II, 401 N. P. Anderson Bldg.
 Horton, John R., 300 First Life Bldg.
 Jones, R. Charlton, Jr., 602 W. 2nd
 Parker, Morris, 3512 Western Street
 Pfeffer, Charles J., 209 Majestic Bldg.
 Pond, Paul Jessen, Jr., 1300 Hamsted
 Price, Homer L., Jr., 1401 W. Lancaster
 Putty, Paul, 1030—7th Ave.



HAD YOU HEARD!

Commercial Standard CS 190-53

(A Standard for Stock Double-Hung Wood Window Units) was promulgated January 15, 1953 by the U.S. Department of Commerce, Commodity Standards Division. It sets standards for double-hung wood window units covering:

Specie of Wood
Moisture Content
Preservative Treatment
Air Infiltration
Operation of Sash Balances
Machining of Parts
Bedding in Putty
Installation of muntins and bars
Assembly and nailing procedures, etc.

HAD YOU HEARD

further...

This AWWI Quality Approved Seal, as shown at right, appears in the inside sash run of the head jamb on window units so certified and approved.

LOOK FOR this Seal when buying or specifying windows... as it is an identifying mark of a double-hung wood window unit of a high quality, and you may be certain that the unit so identified MEETS or EXCEEDS the requirements of Commercial Standard CS 190-53.

that the AWWI Minimum Specifications were used as a guide for this Commercial Standard and that the two are identical?

Before the AWWI Quality Approved Seal can be placed on a double-hung wood window unit, the manufacturer or fabricator of same must have had a prototype of that unit laboratory-tested and certified as *meeting or exceeding* the AWWI Minimum Specifications.



The AWWI Quality Approved Seal



3012 MAPLE AVE. ★ DALLAS, TEXAS

*A non-profit organization conveying information to the public concerning the benefits offered by the Modern, Preservative Treated, Quality Wood Window Unit.

© 1953 By T.A.W.W.I.,

Riley, William C., Jr., 257 Majestic Bldg.
Scudiero, Joseph S., 3915 W. 4th
Terry, Daniel H., 602 W. 2nd Street
Thomas, Raymond F., 1401 W. Lancaster
Ward, Roger L., 1607 Ft Worth Natl Bk. Bldg.
Young, Edmond R., 202 Majestic Bldg.

T. S. A. MEMBERS—FORT WORTH

Bigley, C. L., 328 Lipscomb
Bliss, Adam A., Dan Waggoner Bldg.
Freelove, Charles T., 2304 W. 7th St.
McClure, Curtis A., 2854½ Berry St.
Meador, Wm. C., 508 Flatiron Bldg.

HOUSTON CHAPTER

CORPORATE MEMBERS—HOUSTON

Alexander, W. W., 2008 W. Alabama
Anderson, Ralph A., Jr., P. O. Box 6216
Andrews, Lavone D., Mrs., No. 8 Shadder Way
Baer, David C., 1200 Bissonnet
Bailey, Eugene L., 1503 Baggett Lane
Barnstone, Howard, 811 Lovett
Barthelme, Donald, 3106 Brazos
Belsler, Horace E., 1529 Maryland Ave.
Bennett, Geo. S., 420 E. Cowan St.
Bodet, Edward, 3415 Montrose
Bolton, Preston, 811 Lovett
Borget, Lloyd, 4519 W. Alabama
Briscoe, Birdsall P., 3901 Travis
Brogniez, Raymond H., 2125 W. Alabama
Brown, Hamilton H., 2017 W. Gray
Buffington, Ralph M., 301 Avondale
Bush, F. Woodrow, 827 Ridge Street
Butler, John Rogers, 2047 McClendon
Caldwell, W. C., 4219 Yoakum
Calhoun, Harold E., 2506 Richton
Cato, Claude R., 2103 Crawford
Chan, Charles Soon, 112 Pecore, Office #8
Chase, Charles S. Jr., 1200 Bissonnet
Chillman, James Jr., Warwick Hotel
Clemens, Robert W., 4110 Dennis
Cowell, C. Herbert, 2303 La Branch
Crain, Bluford W. Jr., P. O. Box 6216
DeZurko, Edward R., Rice Institute
Dill, Frank C., 2506 Richton
Dixon, Sam B., P. O. Box 20091
Douty, Truman B., 7335 Dixie Drive
Dunaway, James K., 2425 Ralph
Dunlap, Cecil Norman, 3610 Rice Blvd.
Duryea, William K., 1917 Westheimer
Eichelberger, Dean A., 3402 San Jacinto
Elkins, E. H., 1917 Westheimer
Elliott, Card G. Jr., 4511 Kyle
Elliott, Justin McCord, 2814 Virginia St.
Engberg, Arne, 2130 Welch
Evans, Jack W., 2103 Crawford
Fairchild, Cameron D., 2626 Westheimer
Fasullo, George, 802 Pearson Ave.
Finn, Alfred C., 1005 Bankers Mortgage Bldg.
Finn, Alfred C. Jr., 1005 Bankers Mortgage Bldg.
Frankfurt, Henry D., 337 Knipp Road
Franzheim, Kenneth, 2402 Crawford
Gabert, Lenard, 1315 Bell Ave.
Gaffney, Edward K., 4132 Coleridge
Gainey, John V., 2611 Crocker St.
Gaskill, Clinton R. Jr., 1202 Dennis
Gilbert, Earl R., 6026 Rose Ave.
Glover, Louis A., 3116 Austin
Goehring, Lloyd A., 1917 Westheimer
Golemon, Albert S., 5100 Travis
Greacen, Thomas E., 11, 1010 Winbern
Green, Wilbur E., 1123 Welch
Greenwood, Ben F., P. O. 20091
Heidbreder, George A., 3606 Grammercy

Hoffman, Henry S., 3305 Palm
Horton, Harold B., 4739 Marietta Lane
Howze, Albert H., 2814 Virginia
Hoyt, Richard C., 5519 Memorial Drive
Hutchison, Joseph B., P. O. Box 752
Irvine, Robert A., 5519 Memorial Drive
Jackson, R. Graham, 2506 Richton
James, Delwin V., 3008 Caroline
Jenkins, Raymond L., 2622 Richmond
Johnson, C. A., 3501 Buffalo Drive
Johnston, F. Perry, 3908 Main Street
Jones, William P., 2425 Ralph
Josserand, Louis P., 3710 Mt. Vernon
Kamrath, Karl F., 2713 Ferndale
Keller, Theo. F., 931 M & M Bldg.
Kiefner, Charles H., 3501 Buffalo Drive
Klein, Irving R., 1317 Austin St.
Knotsman, Jack W., 2017 West Gray
Koetter, Gunter W., 1103 S. Shepherd
Krakower, David J., 505 Avondale
Krausse, Rudolph M., 2320 Sage Road
Leibsl, Roy W., 3702 Alameda Road
Lent, Robert F., c/o Rice Inst., P. O. Box 1892
Lewis, Frederick A., 1005 Bankers Mtg. Bldg.
Lindsley, C. H., P. O. Box 8217
Lloyd, Herman F., 4605 Montrose
MacKie, F. J. Jr., 2713 Ferndale
Maddox, H. E. Jr., 3501 Buffalo Drive
Martin, Milton Foy, 3908 Main St.
Matkin, George H., 4101 San Jacinto
Maurice, Robert W., 1314 Richmond, No. 1
McCleary, Thompson H., 2017 West Gray
McDougal, Marshall, 5247 Buffalo Speedway
McGinty, B. B., 2425 Ralph
McGinty, Milton B., 2425 Ralph
McHale, Thomas George, 3501 Buffalo Drive
Moore, Harvin C., 2006 W. Alabama
Morehead, James C., Jr., 354 Piney Point
Moreland, R. B., 4118 Grammercy
Morgan, William B., 4605 Montrose Blvd.
Morris, Seth I. Jr., P. O. Box 6216
Mulvey, Carl Albert, 128 Sul Ross
Neuhaus, Hugo V. Jr., 2303 La Branch
Northrop, J. W. Jr., 3940 Main St.
Northrop, Page H., 3940 Main Street
Nunn, Stayton A., 3272 Westheimer
Nutter, Arthur E., 608 Preston
Palmer, G. A., Jr., 5113 Aspen
Payne, Harry D., 3908 S. Main St.
Phenix, Vance D., 2425 Ralph
Pierce, Abel B. Jr., 2200 Welch
Pierce, Geo. F. Jr., 2200 Welch
Potter, Edward P., 4215 Graustark
Rather, John T. Jr., 2814 Virginia
Red, David D., P. O. Box 6721
Reichert, Edward L., 1917 Westheimer
Reynolds, Joseph B., 2518 Times
Rhodes, Tom C., 2023 S. Shepherd
Rolfe, Walter T., 5100 Travis
Rustay, Geo. Warren, C & I Life Bldg.
Salisbury, H. A., 3501 Buffalo Drive
Schroeder, Edwin A., 1202 Dennis
Shult, Ernest L., 5009 Fannin St.
Sjolin, Gosta, 2811 Blodgett Ave.
Skislewicz, Anton, 1910 Wyndale
Smallwood, Robert C., 3220 Louisiana
Smart, George H., 811 Lovett
Smith, Oliver H., Jr., 3815 Garrott
Staub, John F., 2814 Virginia
Stubee, Henry Aam, 3008 Caroline
Sullivan, Charles, 3901 Travis
Sullivan, Maurice J., 3901 Travis
Swanson, James T., Jr., 821 Chelsea
Swenson, Bailey A., 3106 Brazos St.
Symonds, Walter S., Jr., 707 Hawthorne
Tabor, John Rodney, 1200 Bissonnet
Taylor, Harold W., 1202 Dennis
Tharp, Benjamin C., 1103 So. Shepherd


Specify **IDEAL** *Millwork*
REG. U. S. PAT. OFF.

FOR QUALITY, BEAUTY, ECONOMY

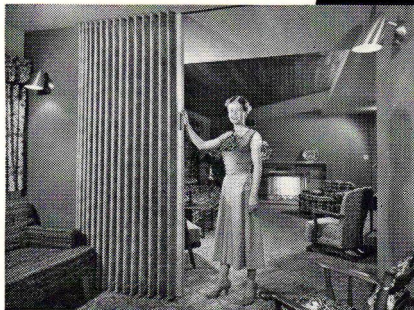
Precision machinery; experienced craftsmen; streamlined production; and the use of top quality materials are the keys to quality in the IDEAL Millwork Factory. The growing demand for the famous IDEAL line has made the IDEAL Factory the South's largest producer of standard millwork. For client satisfaction, specify IDEAL All-Weather Windows; Frame-N-All Door Units; Shadow Box Panel Windows; IDEAL Kitchen Cabinets; Mantels; Corner Cabinets; and the many other top quality IDEAL Products.

IDEAL COMPANY, WACO, TEXAS

SOUTH'S LARGEST PRODUCER OF STANDARD MILLWORK

**See How "MODERNFOLD" doors
Can Help You Solve
Difficult "Space" Problems
See Your  Distributor**

IN DALLAS: Modernfold Door Sales Co.
of Dallas—2024 Farrington Street
IN FORT WORTH: C. F. Williams Co.
P. O. Box 1724, 328 Lipscomb Street
IN SAN ANTONIO: Modernfold Door Sales
Co. of San Antonio—1727 Broadway
IN CORPUS CHRISTI: J. A. Williamson Co.
IN AUSTIN: J. A. Williamson Co.
IN HOUSTON: J. A. Walsh and Co.
P. O. Box 1657, 4301 Gulf Freeway
IN BEAUMONT: J. A. Walsh Co.
1005 S. 4th Street



Tillinghast, Josh, 2023 S. Shepherd
 Tungate, Mace Jr., 2506 Richton
 Turner, Harry A., 2502 Robinhood
 Vale, Wylie W., 517 West Gray
 Voelcker, Herbert R., 1202 Dennis
 Webster, James F. Jr., 2017 West Gray
 Werlin, Eugene, 3501 Buffalo Drive
 White, Emory S., M & M Bldg.
 Williams, Allen R., 5110 S. Shepherd
 Wilson, F. Talbott, P. O. Box 6216
 Winslett, Herschel R., 411 Blalock Road
 Wirtz, L. M., 2506 Richton
 Wisdom, William J., 1315 Bell
 Woestmeyer, Otto F., 7 Oaklawn Drive
 Woodruff, Lewis J., 910 Branard
 Wooters, L. B., 2702 Richmond
 Youens, Ernest L., 5418 Braeburn
 Young, Baldwin N., 3908 Main St.
 Zander, Ralph A., 2914 Virginia

HOUSTON CORPORATE — OUT OF TOWN

Blackburn, Mrs. Clark, 1601 Duncan, Killen
 Cannon, Vard E., Box 85, Trinity
 Cates, Melvin J., P. O. Box 241, Tyler
 Gregory, Carl A., P. O. Box 241, Tyler
 Jones, Roy W., 5402 Holly, Bellaire
 Kent, Charles W., 404 Perry Bldg., Lufkin
 Lammers, Lowell, P. O. Box 3220, Baytown
 Middlekauf, C. B., 5121 Valerie, Bellaire
 Pate, Charles J., 422 Wilson St., Tyler
 Price, Thomas M., 819 Broadway, Galveston
 Rapp, R. R., 417 Stewart Bldg., Galveston
 Ray, Sidney W., 605 Fair Foundations B 1, Tyler
 Rick, Robert G., 604 E. Goodwin, Victoria
 Stone, Fred C., 1872 Calder, Beaumont
 Sturmer, Adolph D., 1020 N. Jefferson, San Angelo

ASSOCIATE MEMBERS—HOUSTON

Anderson, Alvin W., 2306 Steel, Apt. 1
 Barnett, Frederick W., 5014 Pershing Road
 Beadle, Frank F. Jr., 4722 Walker
 Biering, Robert, 3023 Winslow
 Brodnax, Auda C., 927 Peden
 Deane, Walter, 6614 Saxet Avenue
 Du Bose, Jean, 1537 Marshall
 Dvorak, Helen Ann, 6125 Washington
 Gilfillan, Freda Jane, 4333 Clay
 Griffiths, Higford S., 6 Sunset Blvd.
 Guinn, Fred W., 5309 Navarro
 James, Allan K., 3215 Oakmont
 Kerner, Charles H., 11 Waverly Court
 Leifeste, A. A. Jr., c/o Rice Inst., Box 1892
 Mayo, Edward B., 1511 California
 McKim, C. M., Jr., 1615 Blodgett
 Neuhaus, J. V., 1728 Bissonnet
 Nunn, Stayton Jr., 3272 Westheimer
 Ridgeway, Ann, 1724 Marvland Ave.
 Robinson, Thomas A., 535 West 32d
 Rogers, Tom K., 2713 Ferndale
 Whitehead, Thomas P., 811 Lovett
 Wortham, William F., Jr., 1503 Jefferson

ASSOCIATE MEMBERS—OUT OF TOWN

Doughtie, Symond E., 5007 Imperial, Bellaire
 Keeper, David M., 5419 Valerie, Bellaire

JR. ASSOCIATE MEMBERS—HOUSTON

Butler, Robert W., 5530 Hidalgo
 Collins, E. R., 3801 Aberdeen Way
 Cooper, James Barrett, 1647 Cortlandt
 Denny, Clifton E., Jr., 1578 Marvland
 Dunn, Joseph G., 12734 Bertha Lane
 Dykes, A. O., 2508 1/4 Danville
 Elliott, Paul H., 802 W. Main
 Flanagan, Robert V., 2518 Braundry Lane
 Goodrum, James Robert, 5202 Westchester, Apt. 1

Green, G. Morley, 5307 Pomander
 Hutson, Harry E., 2716 Rosedale
 Lake, William, 3940 Main St.
 Lancer, Robert W., 5117 Chestnut
 Lenzen, Wm. R., 708 Merrill St.
 Maas, Elaine H., 2316 Hazard
 Maguire, Lewis, Box 2175
 Modrall, A. William, c/o Golemon & Rolfe,
 5100 Travis
 Munroe, W. A., 2316 Hazard
 Riggs, Hal Don, 5416 Braeburn Drive
 Ulbricht, Herbert H., 3272 Westheimer
 Wagner, William G., 4141 Swarthmore
 Wilson, R. H., Jr., 5530 Hidalgo

JR. ASSOCIATE MEMBERS—OUT OF TOWN

Bowles, Mary Lynn, 404 W. Goodwin, Victoria
 Bowles, R. W., 404 W. Goodwin
 Crow, Donald H., 4606 Holt, Bellaire
 Cummings, Ira K., 512 Ave. C, LaMarque
 Galloway, H. R., Mrs., 806 W. Jaquet, Bellaire
 Gillette, Ray W., 4618 Park Court, Bellaire
 Thompson, Mary Lynn, 5321 Pine St., Bellaire
 Virtue, Ralph T., 546 Lupin, Bellaire

T. S. A. MEMBERS—HOUSTON

Buse, Russell Hardy, 3307 Gramercy
 Dehnert, J. W., 3815 Garrott St.
 Ross, E. M., 2148 Addison

T. S. A. MEMBERS—OUT OF TOWN

Slaughter, S. R., 1903 Bay St., Texas City
 Weaver, Harry E., Rural Rt., Robt. Lee, San Angelo

LOWER RIO GRANDE VALLEY CHAPTER

CORPORATE MEMBERS—LOWER RIO GRANDE VALLEY

Baxter, William C., Pioneer Bldg., Weslaco
 Bowman, Walter Clarkson, 1220 W. Harrison St.,
 Harlingen
 Byers, Edwin W., 901 N. 8th, McAllen
 Byers, Edwin W., S. Tower Road, Alamo
 Ellis, C. Lyman Sr., 305 E. Jackson, Harlingen
 Ellis, C. Lyman Jr., 305 E. Jackson, Harlingen
 Rike, Zeb William, 208 S. Main, McAllen
 Smith, Hadley Waldemar, Box 1750, San Benito
 Suter, Warren C., 605 W. 22nd St., Mission
 Woolridge, A. H., 6 Anthony Bldg., Brownsville
 York, John G., 1220 W. Harrison, Harlingen

ASSOCIATE MEMBERS

Holmes, Brad, 308 S. Main, McAllen
 Ring, John F., Pioneer Bldg., Weslaco

TEXAS PANHANDLE CHAPTER

CORPORATE MEMBERS—AMARILLO

Bliss, Edward N., P. O. Box 1524
 Boren, Thomas M., 1707 W. 8th
 Carder, Macon, Fisk Bldg.
 Carlander, Guy A., P. O. Box 3158
 Ensign, M. Howard, 3408 Hughes
 Fowler, W. Henry, 1100 Rosemont
 Hannon, John Louis, 1115 Broadmoor
 Hucker, Robert E., 41 Johnson Bldg.
 Jura, Edmond Jurksas, 717 W. 16th Ave.
 Kerr, Lawrence, 1801 D Washington
 Kaufman, W. R. Jr., 517 W. 10th
 Rittenberry, James, Fisk Bldg.
 Shiver, Clayton B., 1801-D Washington
 Short, George Washing., 1207 8th Ave.
 Smith, J. Roy, 108 E. 10th Avenue
 Townes, William C., 1208 West 10th Ave.
 Ward, John S., 721 West 7th Street

WEBSTER & JANITROL

WEBSTER ENGINEERING CO.
TULSA, OKLAHOMA

SURFACE COMBUSTION CORP.
TOLEDO, OHIO

Gas and Oil
Burners and
Combustion
Controls

Heating
and Air
Conditioning
Equipment

Represented in the Northern Half of Texas by

CATLETT ENGINEERS, INC.

MANUFACTURER'S AGENT

9020 Garland Road, Dallas, Texas

FA-2683

Sparkling White Marble
and 20 Other Colors
for Roofing —

4 Shades of Green
Now So Popular

We have an inventory of
100,000 bags; can fill
orders for one or more
colors immediately.

DEZENDORF MARBLE COMPANY

2800 E. 17th ST. AUSTIN, TEXAS
PHONE 2-3440

PROFESSIONAL DIRECTORY

FOUNDATION INVESTIGATIONS

- undisturbed sample borings
- laboratory soil tests

GREER & McCLELLAND

Consulting Foundation Engineers
2649 N. Main Houston, Texas 98 Greenwood
Montclair, N. J.

SOUTHERN INSPECTION SERVICE ENGINEERS INSPECTION & TESTS

P. O. Box
8633

P. D. Barnard
Mgr.



3206 Houston
Ave.

Houston, Texas

VA-6621

CORPORATE MEMBERS—LUBBOCK

Atcheson, James E., 204 Sanford Bldg.
Atkinson, Atmar L., 3201 29th St.
Bradshaw, Weldon Leroy, 2514—20th St.
Brasher, Herbert, 406 Avenue M.
Duran, Richard, 1602 Ave. X
Haynes, S. B., 1902 Dixie Drive
Kirby, Laverne H., 1902 Dixie Drive
Kleinschmidt, Florian A., Dept. of Arch. & Allied
Arts, Texas Tech. College
Lockard, Robert Ivan, Dept. of Arch.
Texas Tech. College
Walker, O. R., Box 948

CORPORATE MEMBERS—OTHERS

Cantrell, B. Royall, Pampa
Kerr, John C., Box 471, Plainview

ASSOCIATE MEMBERS

Chisolm, Guy M., Jr., 721 W. 7th St., Amarillo
Hayley, Melvin C., 502 W. Arizona, Sweetwater
Jones, Wendell L., 500 W. Colorado St., Sweetwater
Megert, Russell A., 4002 Gables, Amarillo
Parge, Earl W., 3002-B West Haven Dr., Amarillo
Spencer, Donald R., 2702-B 44th Street, Lubbock

T. S. A. MEMBERS

Berry, J. C., 312 B-West 10th St., Amarillo
Butler, Milton C., 406 Avenue M., Lubbock
Svenson, Carl L., 1509 Avenue K, Lubbock

SAN ANTONIO CHAPTER

CORPORATE MEMBERS—SAN ANTONIO

Adams, Carleton W., 634 Rayburn Drive
Alexander, Kay, 1439 Austin Highway
Ayres, Atlee B., 3002 Transit Tower
Ayres, Robert M., 3002 Transit Tower
Blomfield, Charles, 1501 Majestic Bldg.
Boelhauwer, Chas. T., 803 River Road
Buenz, J. Fred, 1517 Majestic Bldg.
Cameron, Ralph H., 1519 Transit Tower
Carrington, Philip S., 1910 San Pedro
Cocke, Bartlett, 3501 Broadway
Dewees, Dahl, 1501 Majestic Bldg.
Dielmann, Leo M. J., 300 E. Market Street
Eichenroht, Marvin, 702 Maverick Bldg.
Ford, O'Neil, 228 E. Martin
Freeborn, Elmer I., 4600 Broadway
Harris, Bernard P., 702 Maverick Bldg.
Hays, Ernest B., 406 E. Huisache Ave.
Hein, J. Harris, 216 West Craig Place
Hugman, Robt. H. H., 107½ W. Commerce St.
Huie, Charles Jr., 833 Bandera Rd.
Kellner, Herbert F., 406 Austin Highway
Logan, Mrs. Mariam F., 459 University
Lord, Sidney C., Jr., 4600 Broadway
Maltsberger, G. Van, 2013 Belknap
Marmon, Harvey V., Jr., 109 Beverly Mae
Marriott, John M., 905 Frost Natl. Bk. Bldg.
Mathis, Arthur Jr., 804 Amer. Hosp. & Life Bldg.
Newhall, Guy E., 2901 Transit Tower
Nicholson, H. E., 407 Insurance Bldg.
Peery, A. B., 551 Queen Anne
Phelps, Raymond, 1501 Majestic Bldg.
Pitts, DeHaven, 4600 Broadway
Rinard, Clarence, 2015 Alamo Natl. Bldg.
Roberts, Reginald H., 2600 McCullough Ave.
Rogers, Gerald R., 228 E. Martin St.
Rose, Paul Pittman, 400 Labor Street
Ross, Cerf, 111 Auditorium Circle
Ryan, Milton A., 601 Elizabeth Ave.
Shoop, Phillip L., 122 W. Olmos Drive
Silber, Paul G., 1919 W. Cincinnati
Simmons, C. C., 1501 Majestic Bldg.
Simons, Malcomb G., 521 Aztec Bldg.

Smith, Gordon M., 255 Primera Drive
Smith, Harvey P., 1204 Natl. Bk. of Commerce
Spillman, B. W. Sr., 10-11 Chandler Bldg.
Steinbomer, Henry, 907 Travis Bldg.
Thomas, Wallace B., 7007 San Pedro—Rt. 10, Bx 47
Thompson, Thomas B., 804 Amer. Hosp. & Life Bldg.
Vander Straten, Richard, 1546 Milam Bldg.
Walker, John R. Jr., 1918 San Pedro
Walther, Hy. Robt., 102 Heflin Ct.
White, Don N., 2901 Transit Tower
Wildner, John W., 224 W. Park Ave.
Willis, George, 2303 Transit Tower
Wilson, Glenn C., Majestic Bldg.
Wyatt, Benjamin K., 401 Navarro
Zisman, Samuel B., 228 E. Martin St.

CORPORATE MEMBERS—OUT OF TOWN

Kloepfer, Kermit K., 181 Main Plaza,
New Braunfels
Mickelsen, William F., Box 102, Kerrville
Stein, Robert M., 806 E. North St., Victoria
Waters, R. Newell, First Natl. Bank Bldg., Weslaco

CORPORATE MEMBERS—OUT OF STATE

Engelking, Robt. S., Apartado 1588, Emilio
Costelas 212, Mexico, D.F.
Harber, Wm. V., Hdq. & Hdq. 13th A.F., APO 74,
c/o Postmaster, San Francisco, Calif.
Richey, Robert L., Apt. 1190, 100 Memorial Drive,
Cambridge, Mass.

ASSOCIATE MEMBERS—SAN ANTONIO

Dennis, W. Edwin, 618 S. Park Blvd.
Eiserloh, Harold Lee, 1501 Majestic Bldg.
Geren, Harry R., 123 W. Park Avenue
Jersig, John E., 1501 Majestic Bldg.
Lansing, Douglas M., 1501 Majestic Bldg.
Newman, S. L., 204 Travis Bldg.
Noonan, Thomas A., 803 Amer. Life & Hosp. Bldg.
Phelps, Raymond Jr., 1501-06 Majestic Bldg.
Pounders, W. R. Jr., 603 W. Huisache
Ransleben, Otto E., 504 Travis Bldg.
Schultz, Richard, 1204 Natl. Bk. of Comm. Bldg.
Smith, Harvey P. Jr., 1204 Natl. Bk. of Comm. Bldg.
Vollmer, Robert, 3010 W. Ashby Place
Williams, David E. Jr., 435 Sumner Avenue
Williams, J. Clyde, 144 Argyle St.

JUNIOR ASSOCIATE MEMBERS—SAN ANTONIO

Aiken, Howard A., 213 Ogdan St.
Brown, Anderson W., 202 Redrock Drive
Dielmann, Leo M. J. Jr., 300 E. Market St.
Frischmuth, Edward L., 331 Normandy
Garcia, Paul, 309 University
Garza, Gilbert, 162 Continental Ave.
Gondeck, Edw. R., 1807 W. Craig Pl.
Haeuser, Charles, 215 Wesley
Hans, Joseph A., 132 E. Josephine, San Antonio
Harp, A. N., 406 Austin Highway
Howell, Milford, 537 Berkshire Ave.
Lansford, S. T., 1734½ W. Gramacy
Morkovsky, Robert E., 127 Frances Jean Drive
Prassel, Victor Jr., 116 Cardinal Ave.
Redondo, Edwin F., 447 University
Reynolds, Russell R., 1201 S. St. Marys
Rucker, William G., 1010 La Manda
Sellinger, Gerald M., 133 Parland St.
Simpson, Ralph, 280 Retama Place
Torres, Ignacio L., 2306 Waverly Ave.
Valdez, Frank M., 924 Dallas
Vargas, Tom, 2006 Hays St.
Williams, Joe Carroll, Jr., 144 Argyle St.

JR. ASSOCIATE MEMBERS—OUT OF TOWN

Simmons, R. Bruce, 3520 Kellis, Ft. Worth
JR. ASSOCIATE—OUT OF STATE
Wilson, 1st Lt. Robert W., Jr., 300 S. Goodwin St.,
Apt. 315, Urbana, Ill.

SOUTHEAST TEXAS CHAPTER

CORPORATE MEMBERS

Golemon, Harry W., 3795 Long, Beaumont
Heartfield, R. C., Am. Natl. Bank Bldg., Beaumont
Ingram, George L., 690 Hazel, Beaumont
Irby, Benjamin E., 2288 Victoria, Beaumont
Mebane, Mike, 1872 Calder, Beaumont
Neff, John Earle, P. O. Box 1105, Pt. Arthur
Pitts, Llewellyn Wm., 1872 Calder, Beaumont
Ransom, King R., 2633 5th St., Port Arthur
Stone, Fred C., 1872 Calder, Beaumont
Vidrine, Lawrence, Box 1187, Port Arthur
Walmer, Maurice E., 308 Gilbert Bldg., Beaumont

WEST TEXAS CHAPTER

CORPORATE MEMBERS

Ainsworth, Thos. R., 15½ W. Twohig, San Angelo
Brown, Woodlief F., 217 Mims Bldg., Abilene
Castle, David S., 1082½ N. 1st, Abilene
Collier, Wm. M., 212 Morris Blvd., Abilene
Dana, Royal, 403 Central Natl. Bank Bldg.,
San Angelo
Grogan, Douglas R., 1519 Sycamore, Big Spring
Groos, F. Delman, 208 Burks Bldg., Odessa
Kimmel, Rabb Turner, Box 74, Snyder
Maddux, D. C., 1004 S. Oakes St., San Angelo
Pierce, Joe Bill, 301 South Weatherford, Midland
Puckett, O. L., 505 Petroleum Bldg., Big Spring
Smith, Don W., Texas Bank Bldg., Sweetwater
Tucker, Henry Lee, 155 Cedar, Abilene

Pictures in This Issue By Jimmy Laughead, Featherlite Photographer

Convention pictures in this issue of the TEXAS ARCHITECT are by Jimmy Laughead of Laughead Photographers, Dallas, who has been attending the TSA meeting each year to take more than 300 pictures of convention sessions and participants for the Featherlite Corporation.

Prints of each picture are later distributed to TSA members by Mr. Laughead, for the Featherlite Corporation.

Industrial Design Magazine To Begin Publication

Whitney Publications, 18 East 50th Street, New York 22, N. Y., will begin publication of the magazine INDUSTRIAL DESIGN February 1, 1954. The magazine will be a bi-monthly.

● *When you desire*

SERVICE

in the form of

**FURNITURE
INFORMATION**

or collaboration in

**INTERIOR
LAYOUTS**

along with

**GRAPHIC
PRESENTATION**

you - or your

CLIENT

are welcome to our

SHOWROOM *and*

**DESIGN
DEPARTMENT**

any time, with

NO OBLIGATION

Plan to visit ●

FINGER CONTRACT

3131 Calhoun, Houston-AT 3441

LUDOWICI TILE

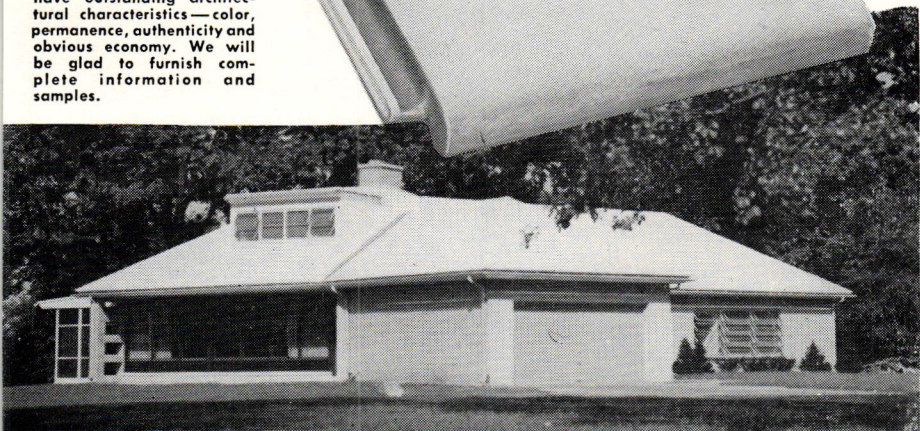
for roofs of

permanence

beauty

**and white tile for heat
reflection on the modern
air-conditioned home.**

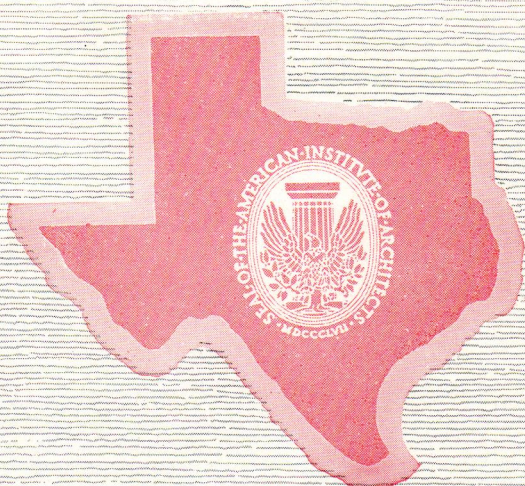
Below is a distinctive contemporary house where the use of white roof tiles accent a style and contribute to an idea. Tile roofs have outstanding architectural characteristics — color, permanence, authenticity and obvious economy. We will be glad to furnish complete information and samples.



LUDOWICI - CELADON CO.

J. M. CLIFFORD, Gen. Sales Mgr.

4801 Lemmon Avenue • Dallas 9, Texas



**THE TEXAS SOCIETY OF ARCHITECTS
THE TEXAS REGIONAL DISTRICT ORGANIZATION OF
THE AMERICAN INSTITUTE OF ARCHITECTS**

Mr. WALTER TAYLOR
AMERICAN INSTITUTE OF ARCHITECTS
1735 NEW YORK AVE. N. W.
WASHINGTON 6, D. C.

Sec. 34.66, P. L. & R.
U. S. POSTAGE

PAID

Houston, Texas
Permit No. 6061

TEXAS ARCHITECT • 1200 BISSONNET • HOUSTON, TEXAS